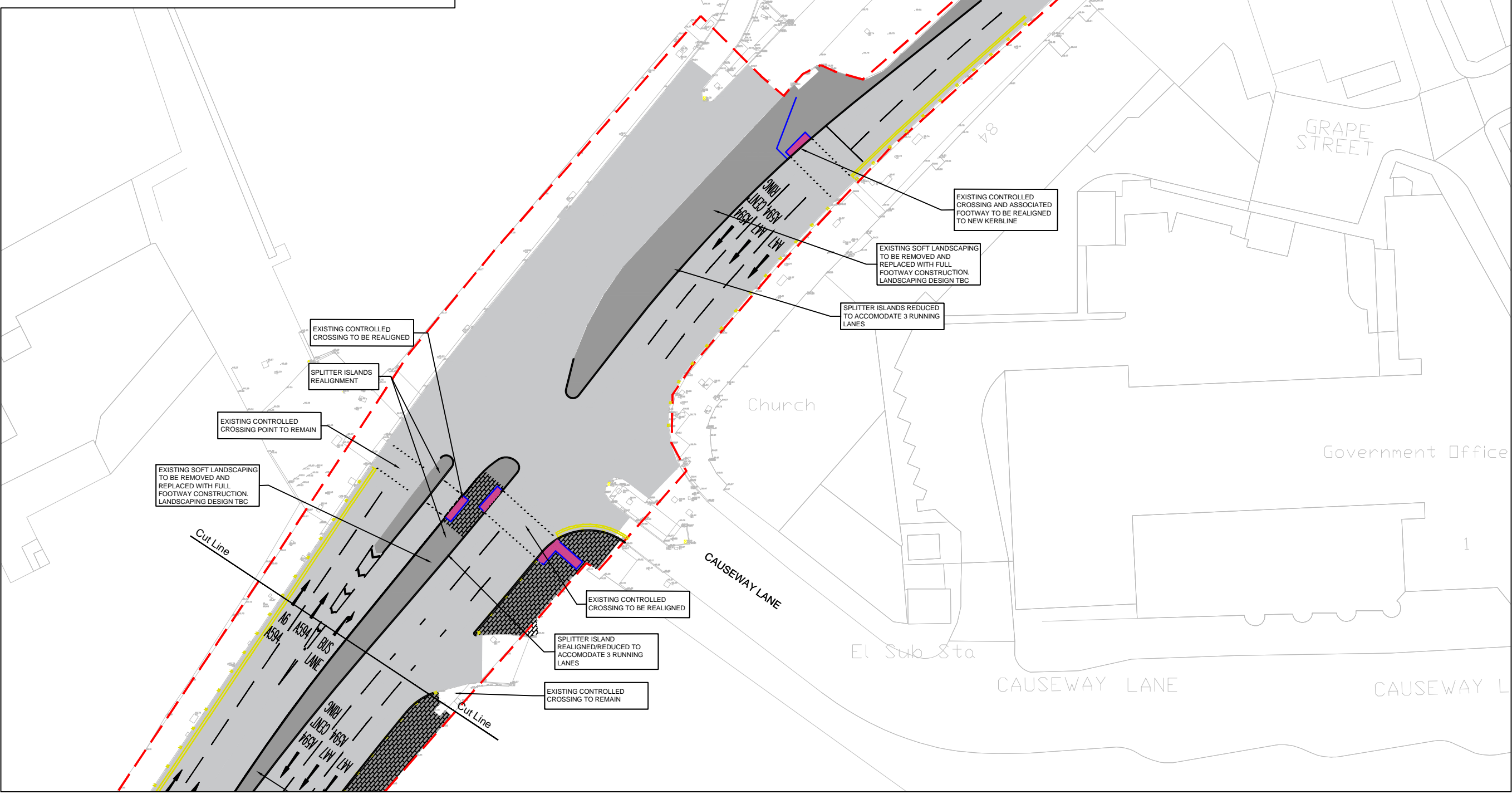
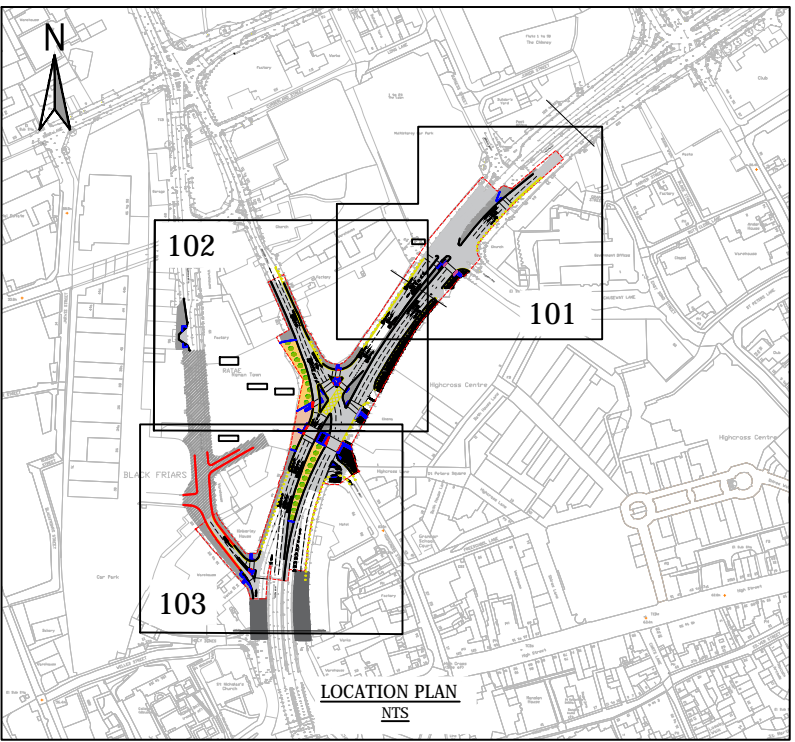


- NOTES - General**
- All dimensions in metres unless stated otherwise.
 - The information shown on this drawing is intended to provide a general outline of the highway improvement works. Please refer to the detailed design drawings for specific scheme details.
 - All works to be undertaken in accordance with Leicester City Council's standards.
 - This drawing is to be read in conjunction with all relevant architects, engineers and specialists drawings and specifications.
 - All works shall be in accordance with the Highway Authority's approved documents and satisfaction. Any reference to the specification shall mean the general specification for roadworks.



FOR APPROVAL

REV	DESCRIPTION	GNO	DM	DM	13.06.17
First Issue					

Client	BY	CHK	APP	DATE

EXECUTIVE PARK
 AVALON WAY
 ANSTEY
 LEICESTER
 LE7 7GR
 TEL: +44 (0)116 234 8000
 FAX: +44 (0)116 234 8001
 e-mail: leicester@wyg.com



Project: **Project Medius, Leicester**

Drawing Title:
S278 Improvement Works
 General Arrangement (Sheet 1 of 3)

Scale	Drawn	Date	Checked	Date	Approved	Date
1:200	GNO	03.05.17	DM	13.06.17	DM	13.06.17
Project No.	Office	Type	Drawing No.	Revision		
A091203	35	12	101	-		